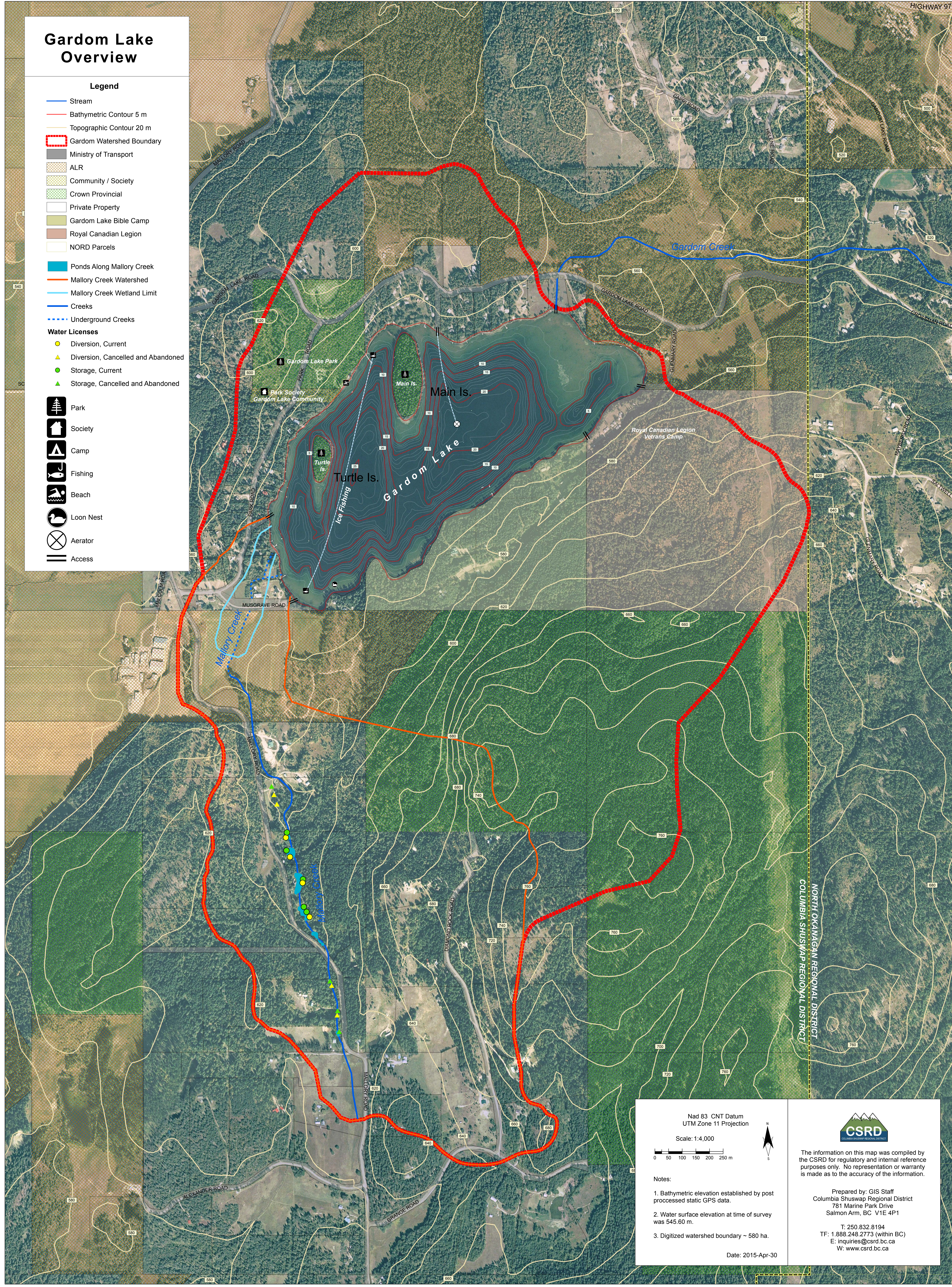


# Gardom Lake Overview

## Legend

- Stream
- Bathymetric Contour 5 m
- Topographic Contour 20 m
- Gardom Watershed Boundary
- Ministry of Transport
- ALR
- Community / Society
- Crown Provincial
- Private Property
- Gardom Lake Bible Camp
- Royal Canadian Legion
- NORD Parcels
- Ponds Along Mallory Creek
- Mallory Creek Watershed
- Mallory Creek Wetland Limit
- Creeks
- Underground Creeks
- Water Licenses**
  - Diversion, Current
  - Diversion, Cancelled and Abandoned
  - Storage, Current
  - Storage, Cancelled and Abandoned
- Park
- Society
- Camp
- Fishing
- Beach
- Loon Nest
- Aerator
- Access



Nad 83 CNT Datum  
UTM Zone 11 Projection

Scale: 1:4,000

0 50 100 150 200 250 m

Notes:

1. Bathymetric elevation established by post processed static GPS data.
2. Water surface elevation at time of survey was 545.60 m.
3. Digitized watershed boundary ~ 580 ha.

The information on this map was compiled by the CSRD for regulatory and internal reference purposes only. No representation or warranty is made as to the accuracy of the information.

Prepared by: GIS Staff  
Columbia Shuswap Regional District  
781 Marine Park Drive  
Salmon Arm, BC V1E 4P1

T: 250.832.8194  
TF: 1.888.248.2773 (within BC)  
E: [inquiries@csrd.bc.ca](mailto:inquiries@csrd.bc.ca)  
W: [www.csrd.bc.ca](http://www.csrd.bc.ca)

Date: 2015-Apr-30